



## CF5000 Gas Mixing Panels

The BSL CF5000 Gas Mixing Panels are a family of gas mixing panels using BSL Mass Flow Control Valves for the accurate gas mixing. The CF5000 Gas Mixers are commonly used in applications requiring higher flows of mixed gas, and commonly used in the food/beverage and welding/fabrication industries.

### CF5000 Gas Mixing Panel highlights

- Available in either pre-set mixtures (determined by the customer) or adjustable against a gas analyser.
- The mixer operates normally against pressure in a buffer tank or storage.
- Gas pressure balancing for constant mix accuracy.
- Accurate Gas Mixing.
- Simple to install.
- Easy to operate.
- Robust and reliable.
- Flows up to 250 Nm<sup>3</sup> per hour possible.
- A very established product in our range.



**Would you like a quick quotation ?**



Tel; ++44 (0) 1634 661100    [solutions@bslgastech.com](mailto:solutions@bslgastech.com)    [www.bslgastech.com](http://www.bslgastech.com)  
BSL Gas Technologies Ltd 101 Laker Road, Rochester Kent UK ME1 3QX

# BSL CF5000 Gas Mixing Panels



## General details

Product name	CF5000 Series	Dimensions mm	600 x 600 x 300
Product details	Gas Mixing Panel	Weight Kg	75
Supply Gases	All commonly used inert gases	Capacity	14 bar g supply/ 5 bar g mixed gas
Outlet Options	Up to 2 mixed gas ratios	Operating Temperature	-20°C to +50 °C
Manufactured and supported by	BSL Gas Technologies Ltd 101 Laker Road Rochester Airport Industrial Est. Rochester, Kent, UK. ME1 3QX	Inlet and Outlet connections	G1/2
		Operating voltage	24 VDC to terminals
Telephone	+44 (0)1634 661100	Component Gas Nominal Concentration %	Tolerances specified in BS EN ISO 14175:2008
Website	<a href="http://www.bslgastech.com">www.bslgastech.com</a>	>5	+10% of the nominal value
Email	<a href="mailto:solutions@bslgastech.com">solutions@bslgastech.com</a>	1<5	+0.5% absolute
		<1	Not specified in the standard

## Main features

High flow 2 gas mixing.  
Inlet pressure balance system  
Constant flow mixing philosophy  
Pre-set or adjustable versions available  
Suitable for all common industrial gases, not O2 or H2 .currently

## Benefits

Accurate gas mixing.  
Reliable and robust panel.  
Easy to install and operate.  
Inlet gas supply checking.  
High flow, accurately mixed gas ratios

**Do you have all the details you need ?**



Tel; ++44 (0) 1634 661100    [solutions@bslgastech.com](mailto:solutions@bslgastech.com)    [www.bslgastech.com](http://www.bslgastech.com)  
BSL Gas Technologies Ltd 101 Laker Road, Rochester Kent UK ME1 3QX

# BSL CF5000 Gas Mixing Panels

---



A typical CF5000 installation. Incorporating a standard 2 gas CF5000 gas mixing panel, a standard BSL AW family gas analyser, both mounted on a stainless-steel washable frame assembly.

**Do you have all the details you need ?**

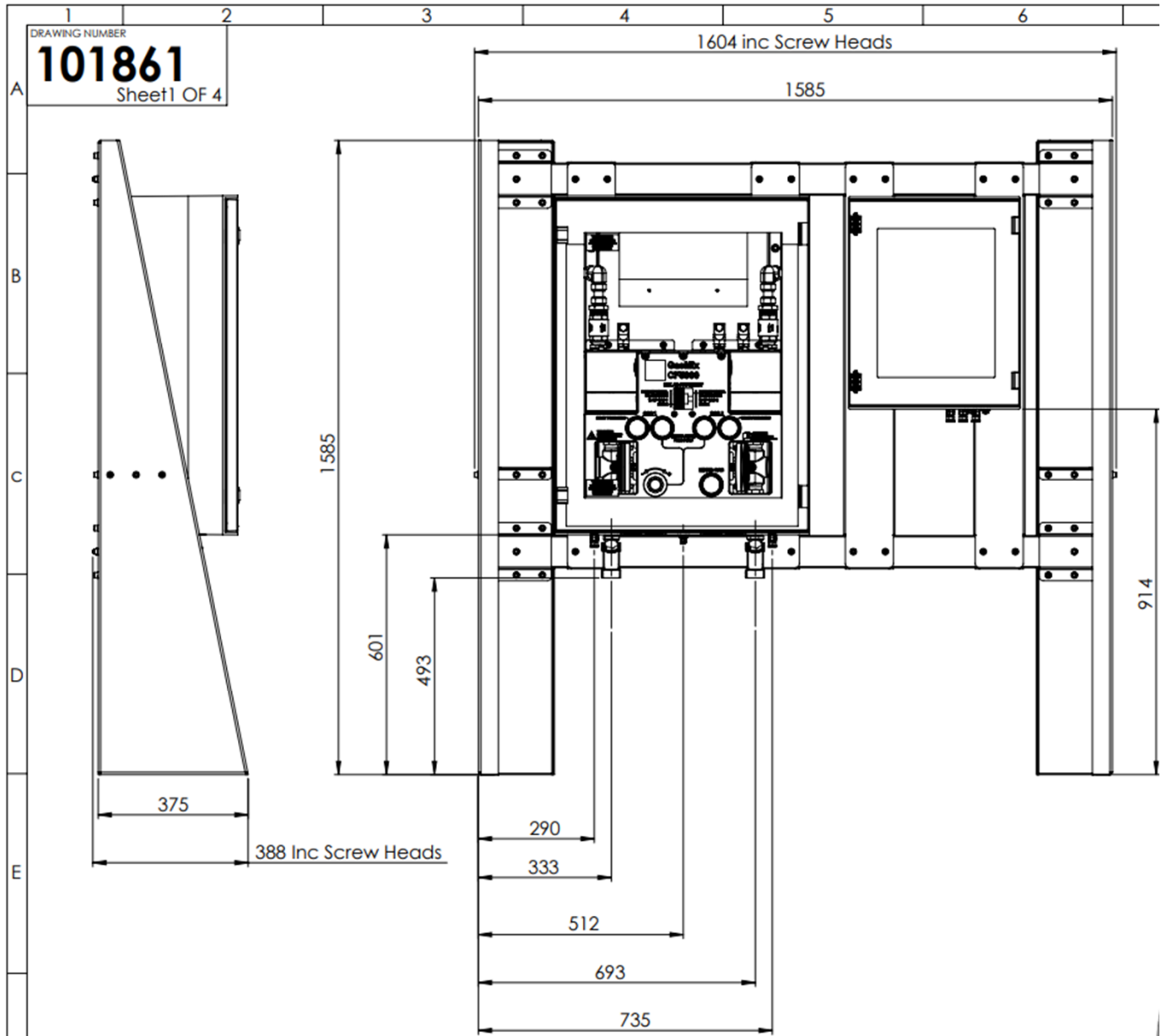


---

Tel; ++44 (0) 1634 661100    [solutions@bslgastech.com](mailto:solutions@bslgastech.com)    [www.bslgastech.com](http://www.bslgastech.com)  
BSL Gas Technologies Ltd 101 Laker Road, Rochester Kent UK ME1 3QX

Issue 001 April 2022

# BSL CF5000 Gas Mixing Panels



**Do you have all the details you need ?**



Tel; ++44 (0) 1634 661100 [solutions@bslgastech.com](mailto:solutions@bslgastech.com) [www.bslgastech.com](http://www.bslgastech.com)  
BSL Gas Technologies Ltd 101 Laker Road, Rochester Kent UK ME1 3QX

Issue 001 April 2022