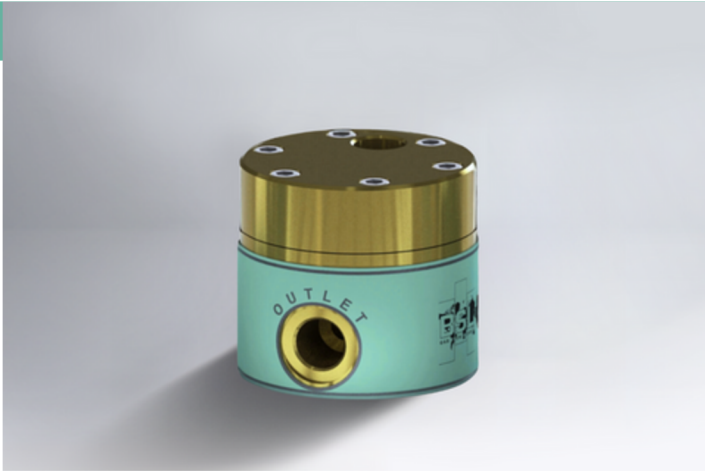


BO396 MFCV

Gas mixing valve with an outlet flow rate of 96 Nm³/hr.

The BO396 Mass Flow Control Valve (MFCV) has an outlet flow rate of 96 Nm³/hr and is designed for use with Oxygen (O₂).



Welding & manufacturing



Inerting & tank blanketing



Heat Treatment & Metalworking



Food Processing & Packaging



Beverage Dispensing

DETAIL	VALUE
Product Name	BO396
Product Type	Mass Flow Control Valve
Supply Gases	Designed for use with O ₂
Manufactured by	BSL Gas Technologies Ltd
Telephone	+44 (0)1634 661100
Email	solutions@bslgastech.com
Address	101 Laker Rd, Chatham, Rochester ME1 3QX

KEY USE POINTS

- Designed to maintain a constant flow rate with varying downstream pressures.
- Designed for use with Oxygen (O₂).
- Maintains accurate flow rate every time, whilst being robust and efficient.

PARAMETER	VALUE
Dimensions	83 mm x 88 mm
Weight	3.8 kg
Adjustment Range	60 to 1700 slpm air @ 14 bar g
Temperature	-10°C to +50°C
Design Pressure	30 bar g
Inlet & Outlet Connections	G1/2" (BSP parallel female)
Flow Accuracy	+3% of Setting

KEY FEATURES

- Accurate flow rate
- Fully adjustable
- Compatible with all common industrial gases
- Easy to operate
- Robust and reliable
- Ready to use straight from the box

MODELS	l/min @ 14 bar g
BO148	30
BO134	500
BO104	1600
BO396 (O ₂)	1600
BO258	5000

FEATURES & OPERATION

- Our mass flow control valves are engineered to maintain a constant flow rate despite variations in downstream pressure.
- They operate by adjusting the size of the opening through which the gas flows, ensuring precise control over the gas quantity in various industrial applications.

