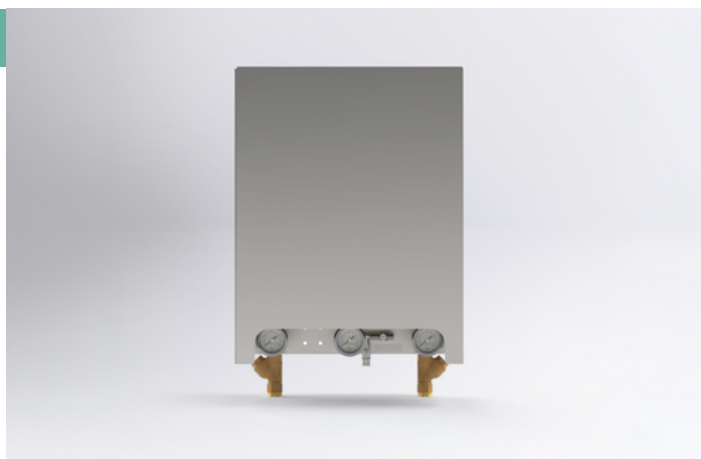


FW Series Gas Mixing Panels

For flow rates of 25 – 100 Nm³/hr.

The GasMix FW Panel range is a versatile and efficient solution for industries requiring precise gas mixtures.



Welding & manufacturing



Inerting & tank blanketing



Heat Treatment & Metalworking



Food Processing & Packaging



Beverage Dispensing

DETAIL	VALUE
Product Name	FW Series
Product Type	Gas Mixing Panel
Supply Gases	All commonly used industrial gases
Manufactured by	BSL Gas Technologies Ltd
Telephone	+44 (0)1634 661100
Email	solutions@bslgastech.com
Address	101 Laker Rd, Chatham, Rochester ME1 3QX

KEY USE POINTS

- No buffer tank required.
- Accurate gas mixing with a robust and reliable design.
- Easy to install and operate.
- Safety interlock to protect your process - if a supply gas is lost, no gas will pass through the panel.

PARAMETER	VALUE
Dimensions	385 mm x 500 mm x 190 mm
Weight	14 to 22 kg
Outlet Options	Up to 3 mixed gas ratios
Capacity	8 bar g supply / 3.5 bar g mixed gas
Operating Temperature	-20°C to +50°C
Inlet & Outlet	G1/2
Connections	
Component Gas Nominal Concentration %	Tolerances specified in BS EN ISO 14175:2008
>5	+10% of the nominal value
1<5	+0.5% absolute
<1	Not specified in the standard

FEATURES AND OPERATION

- The GasMix FW Panel range works by taking two supply gases from either liquid sources or cylinders, which are then filtered before entering the mixing panel. The panel itself is equipped with several key features to ensure accurate and reliable gas mixing.

MODEL	INLET GASES	RANGE
FW1	All common gases	25 m ³ /h
FW2	All common gases	50 m ³ /h
FW3	All common gases	100 m ³ /h

